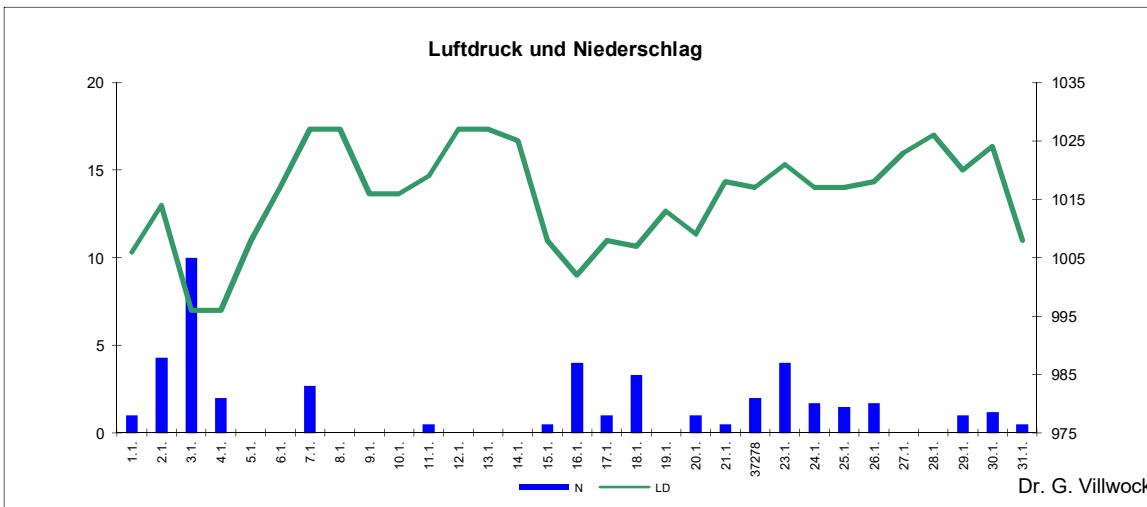
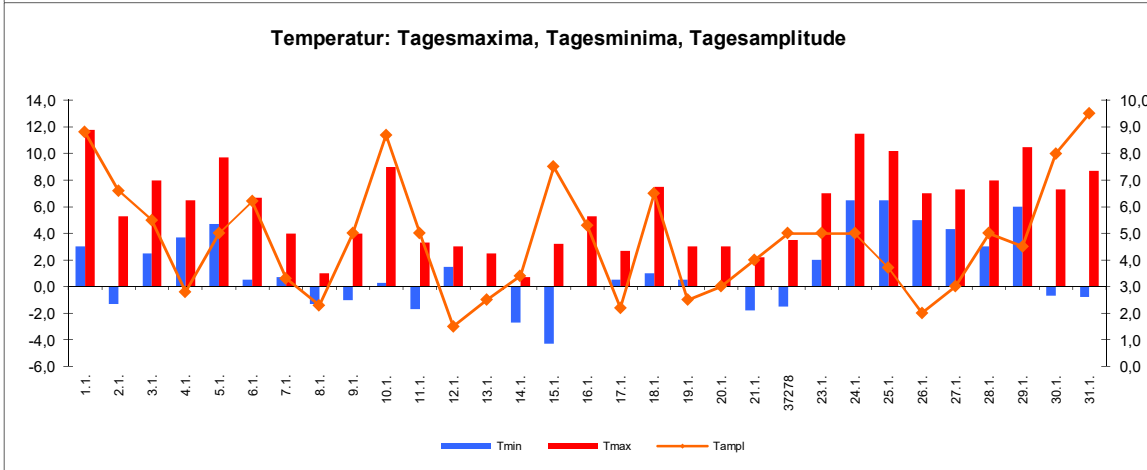
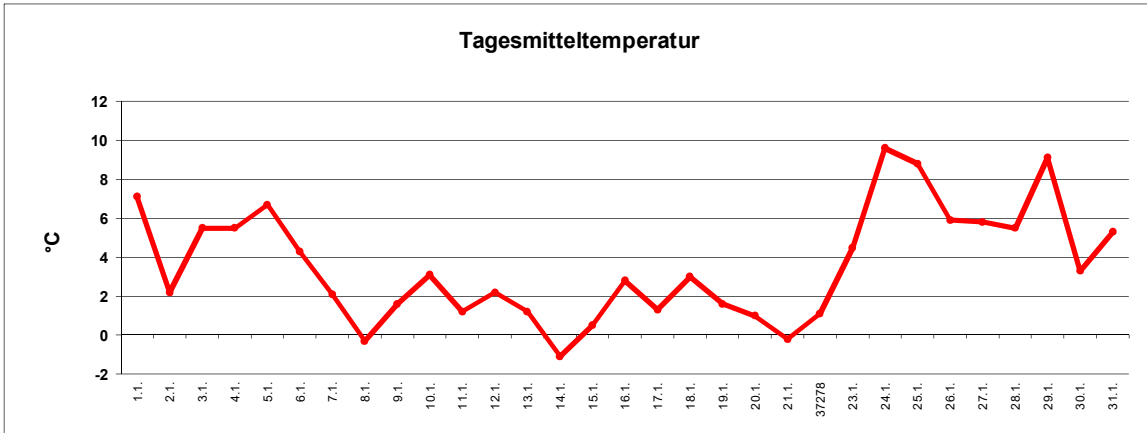


# Wetter Januar 2018



Station Fienstedt 1  
51°32' N 11°46' E Höhe: 138 m NN

	Temperatur	Temp. minim.	Temp. max.	Temp. Amplit.	Niederschlag	Luftdruck	Luftfeuchte	Bewölkung
Monatsmittel	3,6°C	1,1°C	5,9°C	5,5 grd	44,4 mm	1015 hPa	85 %	76 %
Reihe 1999/2017	0,5°C	-1,7°C	2,5°C	4,1 grd	39,6 mm	1012 hPa	86%	70%
Frosttage (Tmin<0°):	10		Eistage (Tmax<0°):		0			
Sommertage (Tmax>25°C):	0		Heiße Tage (Tmax>30°C)		0			
Wärmster Tag:	9,6°C	24.1.	Kältester Tag:		-1,1°C	14.1.		
Höchste Temp.:	11,8°C	1.1.	Niedrigste Temp.:		-4,3°C	15.1.		



Dr. G. Villwock