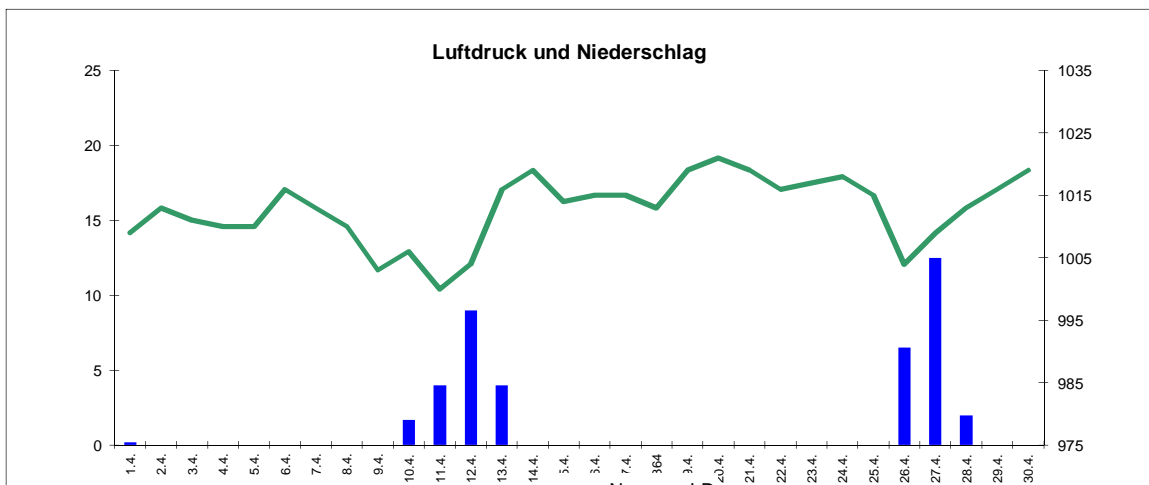
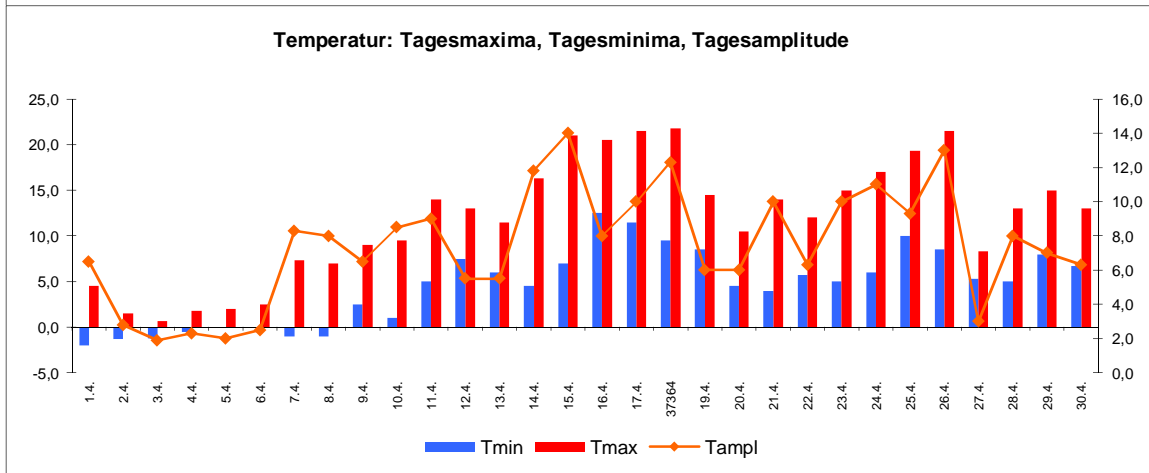
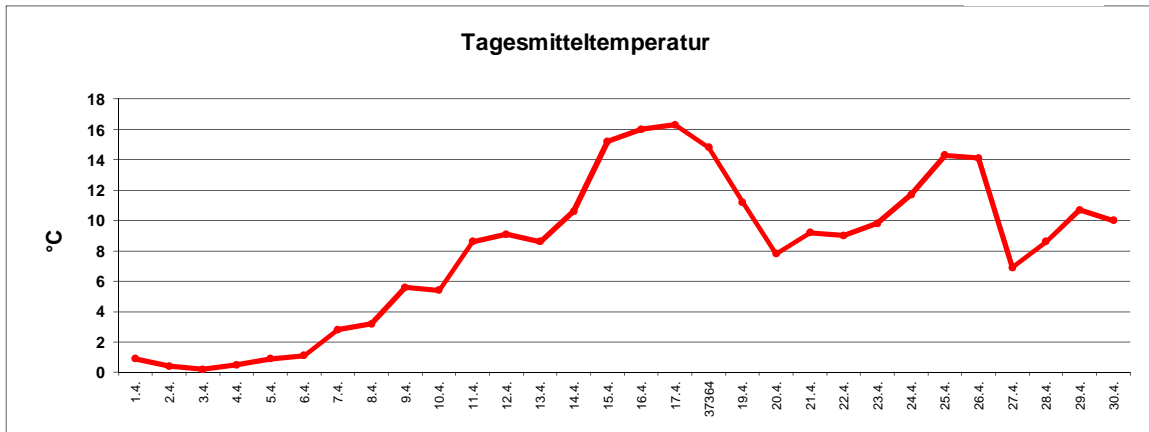


Wetter April 2013



Station Fienstedt 1
51°32' N 11°46' E Höhe: 138 m NN

	Temperatur	Temp. minim.	Temp. max.	Temp. Amplit.	Niederschlag	Luftdruck	Luftfeuchte	Bewölkung
Monatsmittel	8,1°C	4,6°C	12,0°C	7,4 grd	39,9 mm	1013 hPa	65 %	64 %
Reihe 1999/2012	9,1°C	4,4°C	13,9°C	9,5 grd	28,7 mm	1012 hPa	69%	53%
Frosttage (Tmin<0°):	6		Eistage (Tmax<0°):	0				
Sommertage (Tmax>25°C):	0		Heiße Tage (Tmax>30°C)	0				
Wärmster Tag:	16,3°C	17.4.	Kältester Tag:	0,2°C	3.4.			
Höchste Temp.:	21,8°C	18.4.	Niedrigste Temp.:	-2,0°C	1.4.			



Dr. G. Villwock