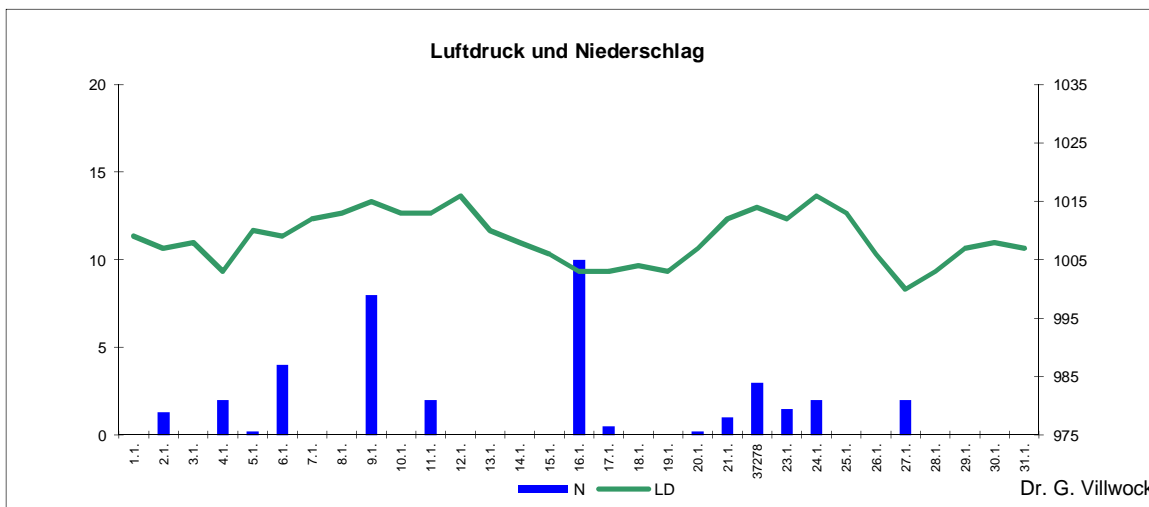
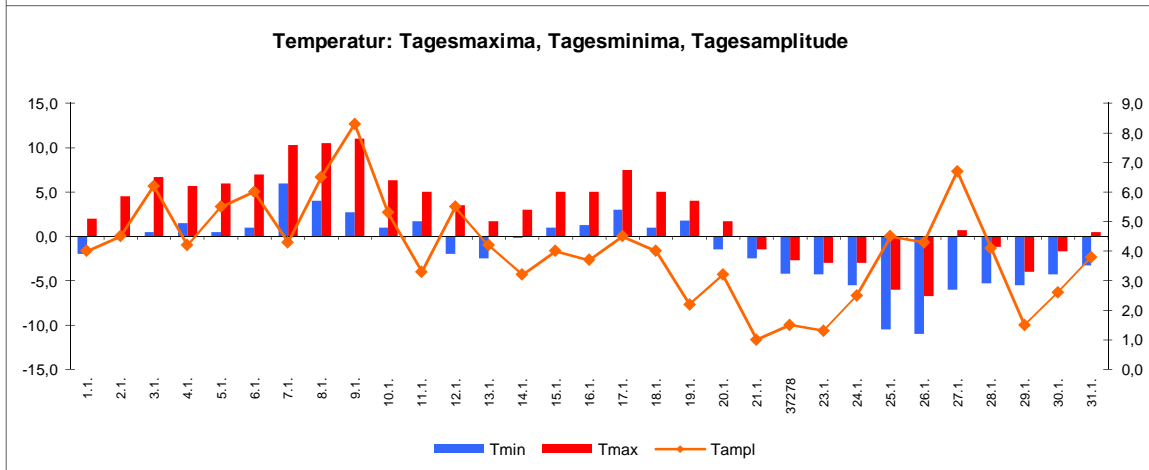
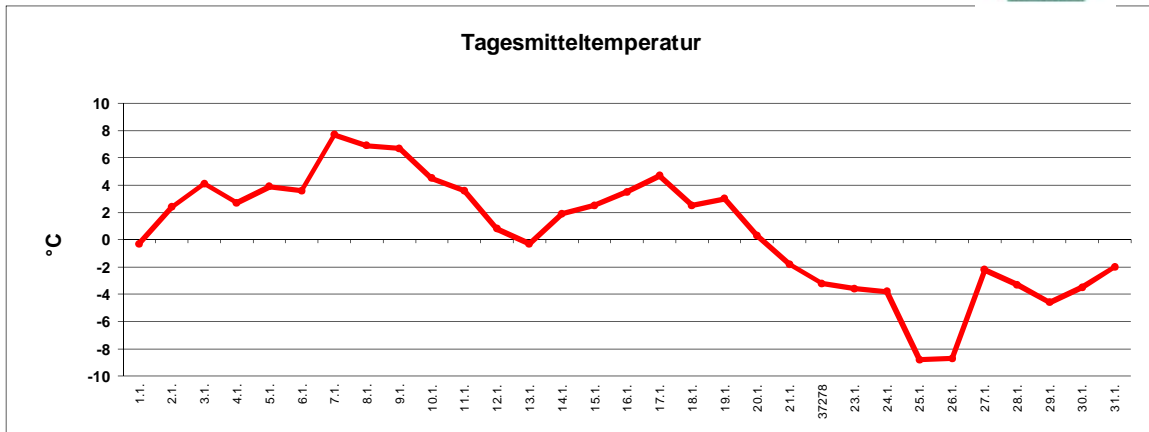


# Wetter Januar 2014



Station Fienstedt 1  
51°32' N 11°46' E Höhe: 138 m NN

	Temperatur	Temp. minim.	Temp. max.	Temp. Amplit.	Niederschlag	Luftdruck	Luftfeuchte	Bewölkung
Monatsmittel	0,6°C	-1,4°C	2,7°C	4,1 grd	37,7 mm	1009 hPa	87 %	74 %
Reihe 1999/2013	0,4°C	-1,9°C	2,4°C	4,2 grd	38,6 mm	1013 hPa	87%	70%
Frosttage (Tmin<0°):	7		Eistage (Tmax<0°):	9				
Sommertage (Tmax>25°C):	0		Heiße Tage (Tmax>30°C)	0				
Wärmster Tag:	7,7°C	7.1.	Kältester Tag:	-8,8°C	25.1.			
Höchste Temp.:	11,0°C	9.1.	Niedrigste Temp.:	-11,0°C	26.1.			



Dr. G. Villwock